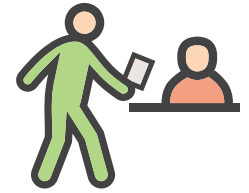


SERVICES


thrive in Downtown Yonge



Downtown Yonge BIA Boundary

 **100,000+ residents live within a 10-minute walk of Downtown Yonge¹**

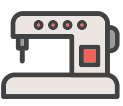
 **Nearly 60,000 employees in over 2,000+ businesses⁵**


 **Home to over 40,000 post-secondary students²**


 **Highest spending postal codes⁴:**
 1) M5B
 2) M5G
 3) M4Y



 **Nearly 60 million pedestrians exploring Downtown Yonge annually³**

 **143 service providers account for 20% of all businesses in Downtown Yonge⁴**

 **Over \$60 million spent on Services annually⁴**

 **Services account for over half a million transactions a year⁴**

Sources: 1. Environics, 2023, 2. Toronto Metropolitan University, 2021, 3. Springboard, 2023, 4. Moneris, 2023, 5. Strategic Regional Research Alliance, 2020

This report is provided for informational purposes only. The information contained herein is obtained from sources we believe to be reliable. However, we do not assume any responsibility for inaccuracies. All opinions expressed and the data provided in this report are subject to change without notice.